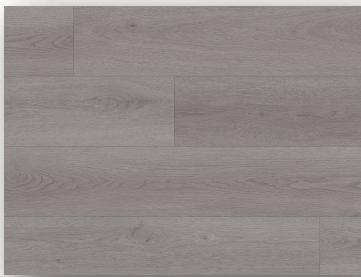


9"×60" plank size



MOUNTAIN WALNUT



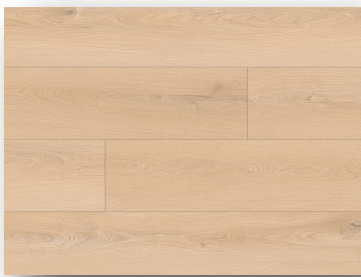
OREGON ASH



SIERRA SPRUCE



URBAN HEMLOCK



VANILLA SUEDE



WESTERN OAK

Features

<u>Dimensions</u>	9" x 60"
<u>Thickness</u>	10mm + 2mm (12mm overall)
<u>Wear Layer</u>	AC4
<u>Texture</u>	EIR
<u>Edge</u>	4 sides deep bevel
<u>Usage</u>	Residential, Commercial
<u>Warranty</u>	25 Years Residential 15 Years Light Commercial



No	Test Description		Test Method	Performance Standard	Pass/Fail/Classification
1	Residual Indentation		ASTM F1917	PSI Equivalent >5000 lbs	Pass
2	Resistance to Chemicals		ASTM F925	Passes	Pass
3	ISO 4918 Castor Chair		ISO 4918	Passes @ 25000 cycles	Pass
4	ASTM E662 (nbs smoke)		ASTM E662	<450	Pass
5	Dimensional Stability		ISO23999/ASTM F326	Passes	Pass
No	Test Description		Performance Standard		Pass/Fail/Classification
6	Scratch/Scuff/Abrasion Properties		Very Good		Pass
7	Commercial	Static Load	≥8MPa(1160psi)		Pass
8		Thickness Swell	≤12%		Pass
9		Light Resistance	No more than slight Effect		Pass
10		Large Ball Impact Resistance	>1400 MM (55.1")		Pass
11		Small Ball Impact Resistance	>500 MM (19.7")		Pass
12		Wear Resistance	≥6000 Cycles		Pass
13		Dimensional Tolerance	Passes		Pass
14		Chair Resistance	30,000 cycles		Pass
15		Surface Bond	1.25 N/MM ²		Pass



Installation instruction

Before You Start, Please read all the instructions before you begin the installation, and improper installation will void warranty.

Important notice:

All wood based products, even those specially designed to have increased resistance to moisture, are hygroscopic (they will react to the moisture in the environment) and as a result will expand or contract accordingly. All source of under floor moisture must be rectified prior to the installation of the floor. Any construction dampness must be completely dry. It is important that you check each plank for any manufacturing defects. Any faults must be reported back to the store of the purchase for an immediate refund or replacement prior to the flooring being installed.

In-Floor Radiant Heat: Flooring can be installed over 1/2" (12mm) embedded radiant heat. Radiant heat systems must have a minimum of 1/2" (12mm) separation from the product. Maximum operating temperature should never exceed 85°F (30°C). Use of an in-floor temperature sensor is recommended to avoid overheating.

- Before installing over newly constructed radiant heat systems, operate the system at maximum capacity to force any residual moisture from the cementitious topping of the radiant heat system. The maximum moisture content should be 2.5% (CM method). Before starting the installation, turn the heat off for 24 hours before, during and 24 hours after installation.
- Make sure that the temperature in the room is at between 65°F (18°C) and 78°F (25°C) during installation.
- Once the installation has been completed, the heating system should be turned on and increased gradually (5 degree increments) until returning to normal operating conditions.
- Refer to the radiant heat system's manufacturer recommendations for additional guidance.

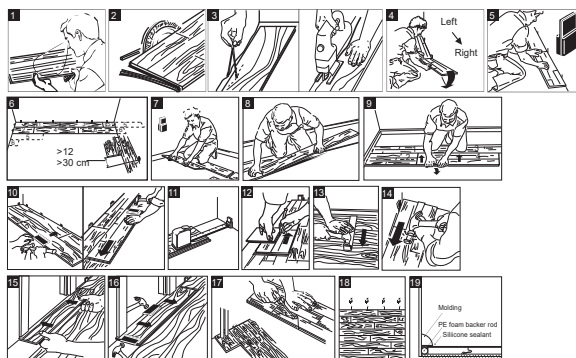
Warning: Electric heating mats that are not embedded into the subfloor are not recommended for use underneath the flooring. Using electric heating mats that are embedded and applied directly underneath the flooring will void the warranty.

- Calculate the room surface prior to installation and plan an extra 10% of flooring for waste.
- Keep the boards flat in the room where they will be installed in the unopened package before you start installation to acclimate. The room temperature must be between 65-78°F (18-25°C) before and during the installation. If the relative humidity in the room is between 35% and 70% the product should be acclimated for 24 hours or more. If the relative humidity is below 35% or above 70% the product should be acclimated for 48 hours or more.
- Inspect your subfloor before you begin. It must be clean, dry (max. 2.5% moisture content-CM method) and level to 5mm (3/16") within a 3 meters (10 foot) span.
- If this flooring is intended to be installed over the existing wooded floor, it is recommended to repair any loose boards or squeaks before you begin installation.
- With a floating floor you must always ensure you leave 1cm (1/2") gap between walls and fixture such as pipes and pillars, stairs, etc. Tip: When stalling around pipes, drill the holes 20mm (3/4") larger than the diameter of the pipes.
- A vapor barrier to be installed over concrete substrates. In the case of the installation is done over a wood substrate on or below grade, a vapor barrier must be installed if there is not a vapor barrier existing in a well-ventilated crawl space. A minimum 0.15mm (6 mil) plastic poly sheeting should be used as a moisture barrier. Underlayment thicker than 3mm (1/8") are not advised.
- Decide the installation direction. It is recommended to install the length direction of the planks parallel to the main light direction.
- Measure the area to be installed: The board width of the last row shall not be less than 50mm (2"). If so, adjust the width of the first row to be installed. When measuring, take the free gap requirement of about 10mm (1/2") of the floor perimeter into account. In narrow hallways, install the floor parallel to the lengthways.
- Inspect you laminate flooring. No claims on manufacturing defects will be accepted after installation.
- The flooring must be used only indoors in a dry, climate-controlled area and can not be used in bathroom and shower room.
- Installation area in length and width direction should be less than 12m (40 Feet), and larger than this size need to use moulding for transition.

Tools and Supplies Required

- Foam Underlay • Spacers • Saw Adhesive • Tape Minimum 6 mil poly vapor barrier for crawl space and concrete floor installations • Rubber Mallet • Ruler • Pencil • Tape Measure • Utility Knife • Construction Adhesive

Flooring Installation



1. Inspect each plank. Floor should be installed blending planks from several cartons at the same time to ensure good color and shade mixture throughout the installation.
 2. For the first row along straight walls, remove the tongue on all long side joints and on the short side of the 1st plank only.
 3. For uneven walls, trace contour on tongue- side of plank and cut.
 4. Assemble the first row tongue side toward wall. Insert the end tongue into the end groove and rotate downward to assemble. Keep the planks aligned and the joints closed.
 5. Two spacer thick side to the thick side=1cm(1/2")
 6. Provide a 1cm (1/2") space for expansion on all sides. First piece must be at least 12" long. Start new rows with pieces trimmed from previous row. Ensure at least a 12" end joint offset.
 7. At a slight angle, insert tongue of plank 2 into the groove of plank 1 until the laminate edges meet, and then rotate down until the joints lock.
 8. Join the short end of the plank first. There will be a gap on the long side joints when the plank is rotated down.
 9. Raise the outside edge of the plank upward approximately 1". Maintain this angle as you push the plank in until the laminate edges meet. Rotate downward on the plank until the joint locks. Repeat these steps to complete the installation.
- Installation Tip:** Place a carton of planks across the end of the row being installed to keep installed planks in place during installation.
10. **Alternate Tap Method:** Align the tongues into the grooves of the long and short sides of the planks. Install the long side first by placing a tapping block no closer than 8" from both end and tap lightly along the long side until the joint is closed tightly. Then tap the end using the tapping block into a locked position. **Note: Uneven tapping or use of excessive force may damage the joint.**
 11. Ensure there will be a 1/4" gap (after the joint is closed) to the wall for expansion.
 12. For the last row, align the plank to be used on top of the 2nd to last row. Using a full width plank as a spacer, trace wall contour and cut plank.
 13. For the last row, install the long side tongue into the groove with the end joint aligned. Using a pull bar and hammer, work evenly along the length of the plank and lightly tap the joint closed.
 14. After tapping the long side joint closed, tap the short side closed, using a tapping block or a pull bar.

Installation under Doorway Frames

15. Slide plank under pre-cut door frame.
16. Tap the long side joint closed first. Then tap the end joint closed.

Installation around Fixed Objects (such as Pipes)

17. Allow 1/4" expansion space around pipes or other fixed objects.

Finishing the Installation

18. Remove all spacers
19. Create a watertight seal by applying flexible 100% silicone sealant to the entire perimeter of the installation. DO NOT use acrylic sealant.

Maintenance

Clean the floor regularly with a vacuum cleaner or dry mop. If necessary, the floor may be cleaned with a wet mop and a laminate cleaner. Avoid using too much water. To protect the floor from sand we recommend you to use the doormats at entries (but do not use mats with a rubber backing). Place felt floor protectors under the legs of moveable furniture. Chair casters should be rubber - not plastic or metal.

DO NOT pour liquid, directly on floor or use an excessively wet mop that will puddle or leave moisture standing on the floor.

DO NOT use detergents, abrasive cleaners, soaps, waxes or polishes.

DO NOT use rotating beater bars, floor scrubbers, steamers, jet mops, buffers or similar products.

Wipe up spills immediately.

